



COP26

**Global
Assembly**

GLASGOW 2021

Claire Mellier - Iswe

www.iswe.org

Twitter @clmellier

KNOCA - 31st January 2023

Inclusion & Diversity in Climate CAs



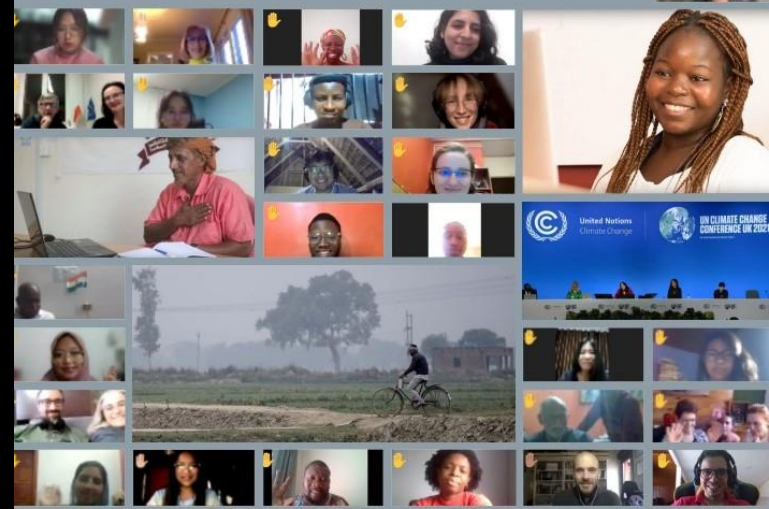
globalassembly.org/report



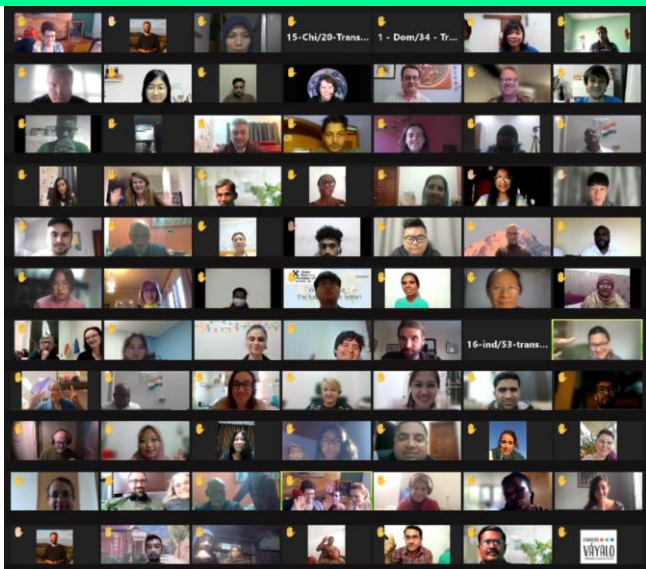
Report of the 2021 Global Assembly on the Climate and Ecological Crisis

Giving everyone a seat at
the global governance table

November 2022



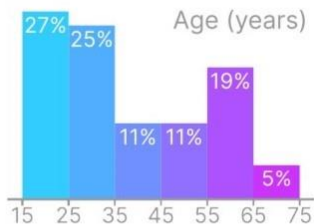
Core Assembly



100 people (98 by the end of the process), a descriptive sample of the global population representative by geography, gender, age, education and attitude to climate change, chosen by **civic lottery**.

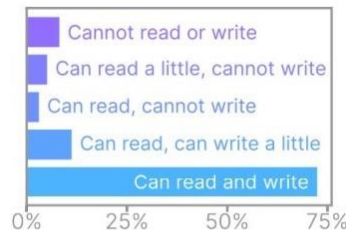
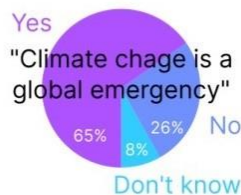
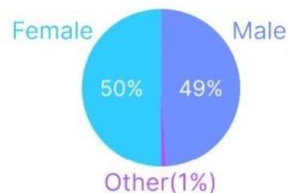
From October through December 2021, 98 Assembly Members convened over 20 sessions across 12 weeks — a total of 68 hours of online learning, deliberation and voting.

Key demographics



- * 70% use a mobile phone every day
- * 36% never use a computer
- * 34% had never used a video call

42 languages spoken
 Most common: English
 2nd: Chinese
 3rd: Hindi



16 Assembly Members belong to an indigenous community
6 Assembly Members are refugees or internally displaced



working or home-making	64%	retired	12%
studying	15%	unemployed	8%

*

* A percentage of only those who provided this information
 † Currency conversion performed 10 May 2022

Inclusive, accessible, equitable / just?



Inclusive: if it invites everyone who may be affected by a decision

- Core Assembly complemented with Community Assemblies

Accessible: if everyone who is invited can participate fully in the process

- Logistics: Translation, technical support (i.e. laptop, internet connection), breakouts in suitable timezones
- Equal compensation: Core Assembly members who participated were compensated equally (\$ 600 for 68 hours of engagement)

Equitable / Just: if it actively acknowledges and addresses historic/ongoing disadvantages some groups face

- Governance: Original nations, indigenous wisdom included (Knowledge and Wisdom Committee)
- Decentralisation of the delivery: global community of more than 400 individuals, and at least 120 organizations across 112 countries
- Process design: different ways of learning acknowledged, but still written materials heavy.
- Research findings show the challenges and limitations of the approach



Global Assembly

www.globalassembly.org

www.iswe.org